

Little River Wetlands Project

Partners for Pollution Prevention

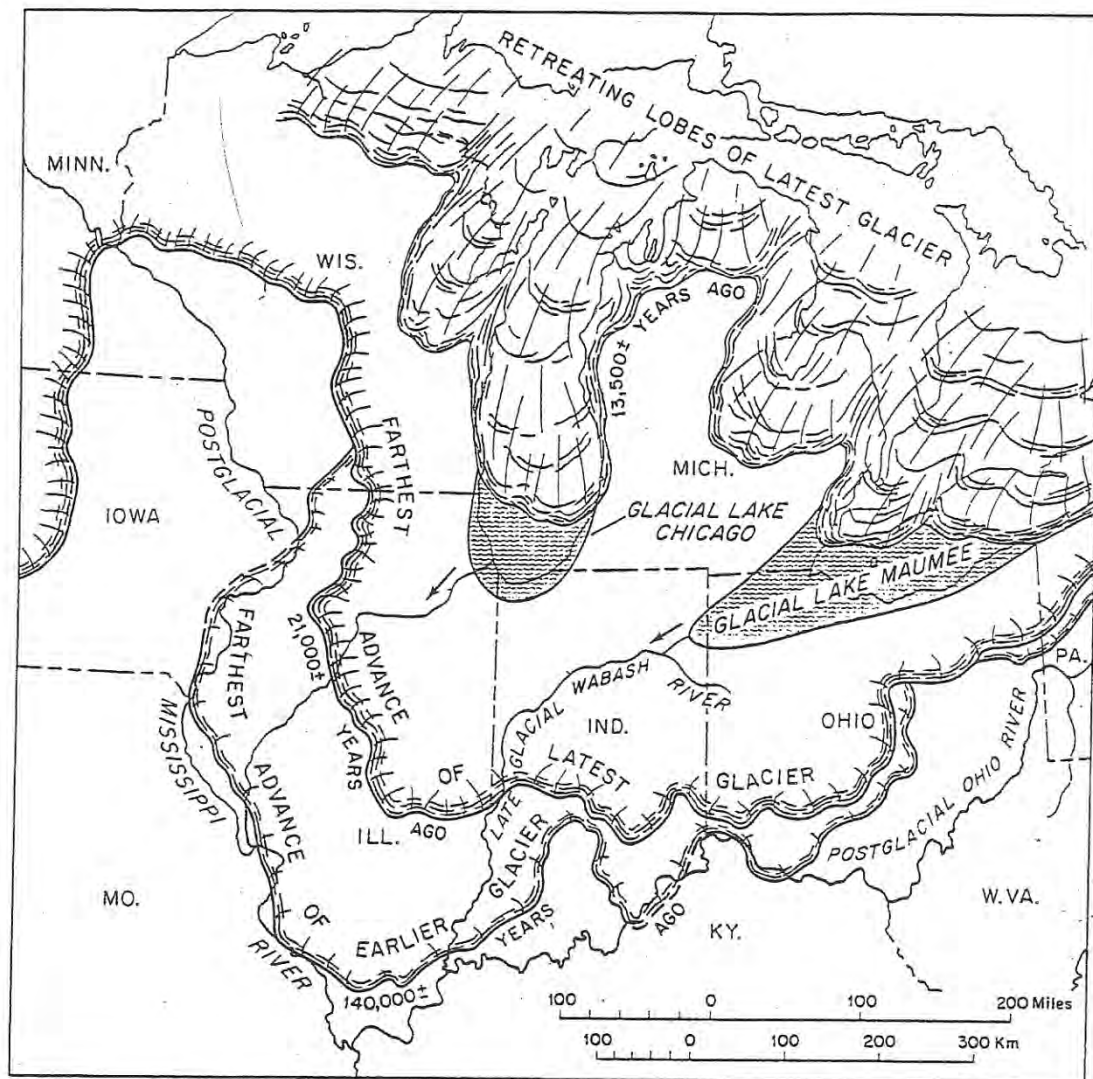
June 13, 2012

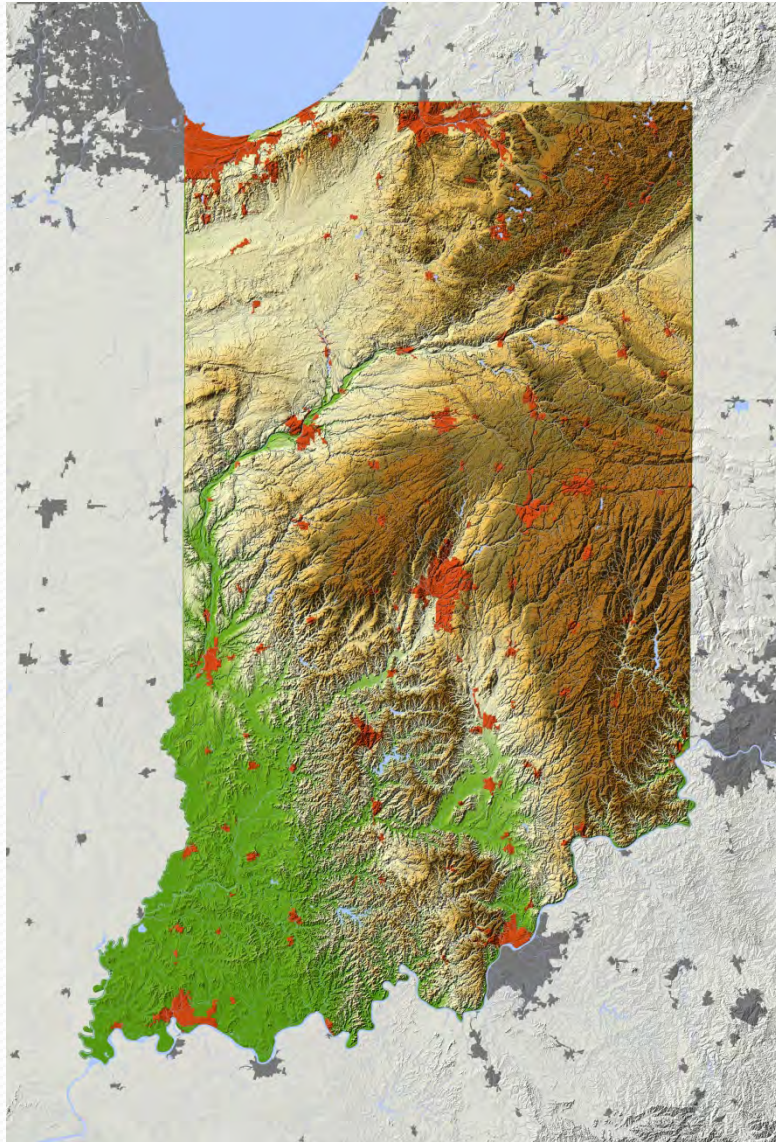
General Motors Assembly



Sean Nolan,
Executive Director







The Carving of the Valley

- Fort Wayne Moraine
- Lake Maumee
- Maumee Torrent
- Continental Divide
- Sand Dunes



The Great Marsh

- 25,000 acres teemed with wildlife
- Important hunting grounds
- Portage connecting the Great Lakes and the Mississippi River system
- Drained in late 1800's



Our Mission:



- Restore and protect wetlands in the Little River watershed southwest of Fort Wayne, Indiana
- Provide educational opportunities that encourage individuals to be good stewards of wetlands and other natural ecosystems



Why Wetlands?

- Water quality
- Floodwater storage
- Improved wildlife habitat
- Education
- Recreation



Restoration

- Invasive and non-native plant control
- Earthwork and hydrology restoration
- Grasses, sedges, and wildflowers
- Tree and shrub planting



Nature Education

- Programming is free to the public
- Canterbury School
- Timothy L. Johnson Academy
- The Ramblers



Recreation

- Our preserves feature 15 miles of hiking trails
- Birding
- Earth Day Fort Wayne
- Walk for the Wetlands
- Monarch Festival
- Salamander Strut 5k



LRWP now protects 1,164 acres

- Arrowhead Marsh – 97 acres
 - Arrowhead Prairie – 158 acres
 - Eagle Marsh – 716 acres
 - Little River Landing – 53 acres
 - Plus a conservation easement – 140 acres
-
- More to come!



Eagle Marsh Nature Preserve

- 716 acres
- One of largest wetland restoration projects in history of the state
- Largest nature preserve in Allen County
- 11 miles of hiking trails
- Free and open to the public















Eagle Marsh

New 11 Acres

Fox Island County Park

Legend

-  Barn
-  Trails
-  Historic Towpath Trail
-  Multi Use Trail (Completed)
-  Multi Use Trail (To be completed)
-  Graham-McCulloch Ditch
-  Railroad
-  Water Bodies
-  Woods
-  Parking

Lutheran
Hospital
Entrance

Eagle Marsh Trails

West Jefferson Blvd.

Engle Road

I-69

Exit 102

Boy Scout Office



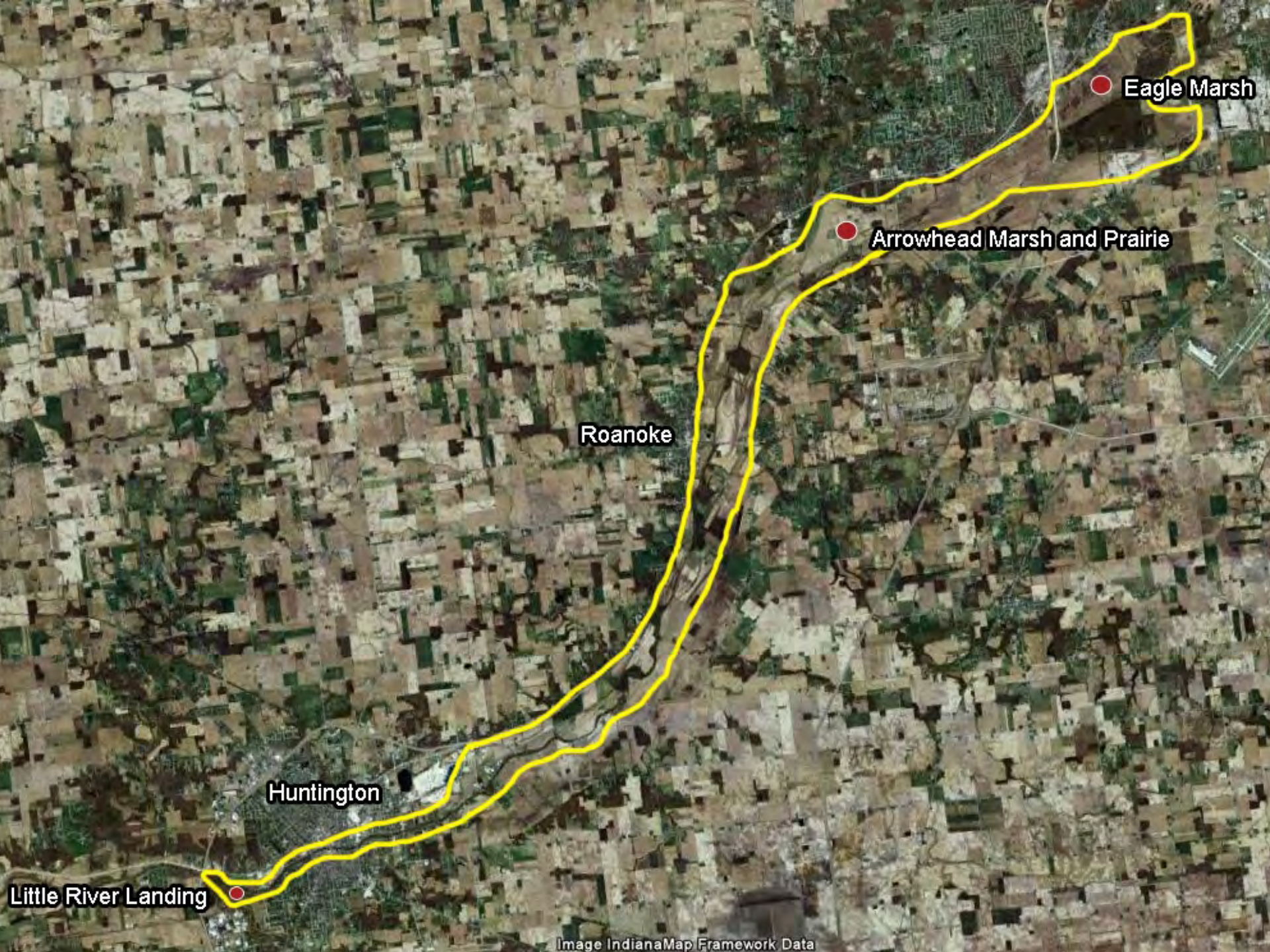
Trail Length

- | | |
|----------------|----------------|
| (1) 1.9 Miles | (6) 1.5 Miles |
| (2) 1 Mile | (7) 0.5 Miles |
| (3) 1 Mile | (8) 0.5 Miles |
| (4) 0.15 Miles | (9) 1 Mile |
| (5) 0.15 Miles | (9A) 0.5 Miles |



LITTLE RIVER
WETLANDS PROJECT

lrwp.org



Eagle Marsh

Arrowhead Marsh and Prairie

Roanoke

Huntington

Little River Landing

“What the Little River folks are doing at Eagle Marsh brings together two of the things we’ve worked hardest on: one is the constantly improved protection of our beautiful spaces. They’re doing a wonderful job of restoring and bringing back the wetlands and habitat here, but also trails and wellness and fitness. They come together in an unusually ideal way. So we’re happy to support it and celebrate what this great group of citizens is accomplishing.”

- Governor Mitch Daniels





Thank you!

